

LVH - LAS VEGAS HOTEL & CASINO SUITES

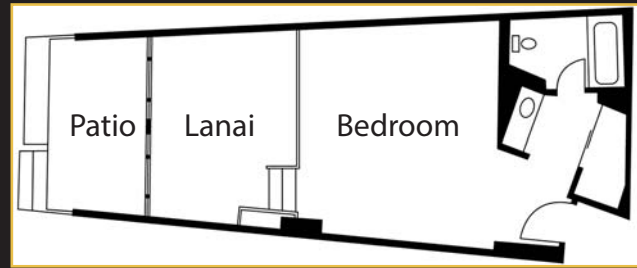
LANAI SUITES



The Lanai Suites are 440 sq. ft. and provide a bedroom with a split level parlor and a patio. When the mood strikes you, adjourn outside to the patio, relax on a chaise lounge and take in views of the Las Vegas Strip or the Las Vegas Country Club golf course. In either case, you are just steps from the pool deck.

Sq. Ft. 440 (accommodates up to 5 people)

Lanai Poolside: CEA Member: \$4,370 / Non-Member: \$5,070 / Additional Night: \$875
Lanai King/Doubles: CEA Member: \$4,340 / Non-Member: \$5,030 / Additional Night: \$870



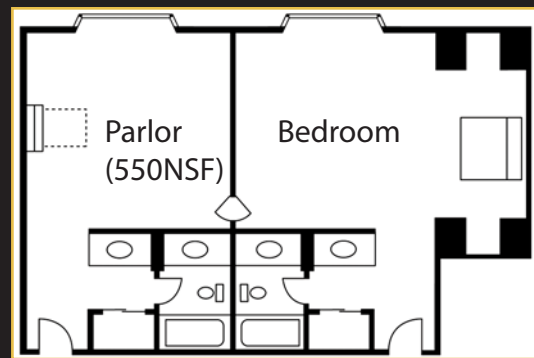
Junior 1 Bedroom: CEA Member: \$5,430 / Non-Member: \$6,300 / Additional Night: \$1,085
Junior 2 Bedroom: CEA Member: \$7,950 / Non-Member: \$9,240 / Additional Night: \$1,590

JUNIOR SUITES



Whether traveling on business or pleasure, the Junior Suite provides the space and quality to enhance your stay. Enjoy the comfort of the 400 sq. ft. bedroom and a separate 350 sq. ft. parlor. The parlor also includes a Murphy bed.

Sq. Ft. 750 (accommodates up to 10 people)



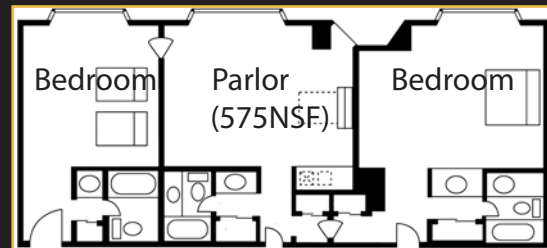
Central 1 Bedroom: CEA Member: \$5,810 / Non-Member: \$6,750 / Additional Night: \$1,165
Central 2 Bedroom: CEA Member: \$8,410 / Non-Member: \$9,750 / Additional Night: \$1,680
Central 3 Bedroom: CEA Member: \$10,200 / Non-Member: \$11,900 / Additional Night: \$2,040

CENTRAL TOWER SUITES



Whether traveling with friends, family or a business associate, the Central Tower Suite gives you the option of adding a second bedroom. The 575 sq. ft. parlor includes a Murphy bed and connects to either one or two bedrooms (400 sq. ft. each).

Sq. Ft. 975 (accommodates up to 25 people)



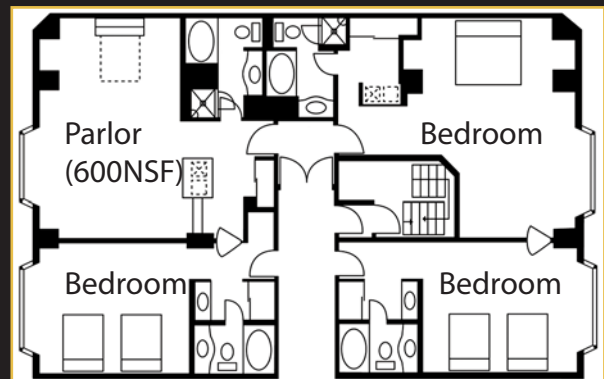
East 1 Bedroom: CEA Member: \$8,350 / Non-Member: \$9,960 / Additional Night: \$1,670
East 2 Bedroom: CEA Member: \$10,670 / Non-Member: \$12,810 / Additional Night: \$2,135
East 3 Bedroom: CEA Member: \$12,120 / Non-Member: \$14,300 / Additional Night: \$2,425

EAST TOWER SUITES



Our East Tower Suites have the option of one, two or three bedrooms. The 575 sq ft Parlor includes a Murphy bed. The bedrooms each measure approximately 400 sq. ft.

Sq. Ft. 1,000 (accommodates up to 25 people)



Please contact Bobby Baumler (bbaumler@CE.org) with additional questions.
Reservation: 5-nights (January 7-12, 2013)

Actual room and parlor setup and dimensions may differ slightly from those represented on diagrams. No freight shipments are permitted to be delivered to CES Hospitality Suites as these suites may not be utilized for exhibiting equipment or products. Please refer to the LVH Suites addendum for detailed Rules & Regulations.



LVH - LAS VEGAS HOTEL & CASINO SUITES

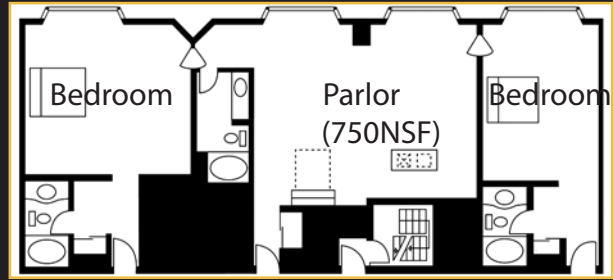
NORTH TOWER SUITES



Whether working or playing in Las Vegas, industry leaders and business executives call our North Tower Suites home. The bedroom is a spacious 400 sq. ft. and connects to a separate 725 sq. ft. parlor that contains a Murphy bed. This suite can also come with a second bedroom.

Sq. Ft. 1,125 (accommodates up to 40 people)

North 1 Bedroom: CEA Member: \$7,920 / Non-Member: \$9,350 / Additional Night: \$1,585
 North 2 Bedroom: CEA Member: \$10,250 / Non-Member: \$12,310 / Additional Night: \$2,050
 North 3 Bedroom: CEA Member: \$12,780 / Non-Member: \$15,350 / Additional Night: \$2,555



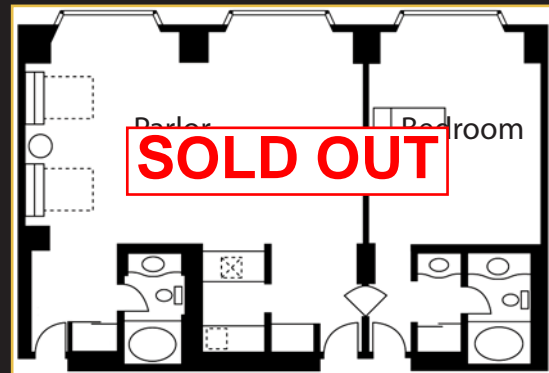
Exec. Parlor Only: CEA Member: \$5,900 / Non-Member: \$6,925 / Additional Night: \$1,180
 Exec. Parlor + 1 Bed: CEA Member: \$8,030 / Non-Member: \$9,750 / Additional Night: \$1,605

EXECUTIVE SUITES



It doesn't take an executive to appreciate the versatility of the Executive Suites. These spacious suites (400 sq. ft. bedroom plus a separate 750 sq. ft. parlor with two Murphy beds) are perfect for presentations, meetings and entertaining

Sq. Ft. 1,150 (accommodates up to 50 people)



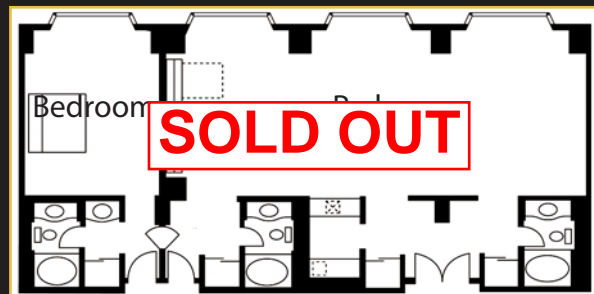
Director's: CEA Member: \$9,100 / Non-Member: \$10,570 / Additional Night: \$1,820

DIRECTOR'S SUITE



The Director's Suites provide the perfect setting for sealing that big deal or celebrating any milestone. At 1,425 sq. ft. (1025 sq. ft. parlor) you'll have room for up to 60 people to mix and mingle. Gather around the wet bar or get comfortable in the living room area.

Sq. Ft. 1,425 (accommodates up to 60 people)



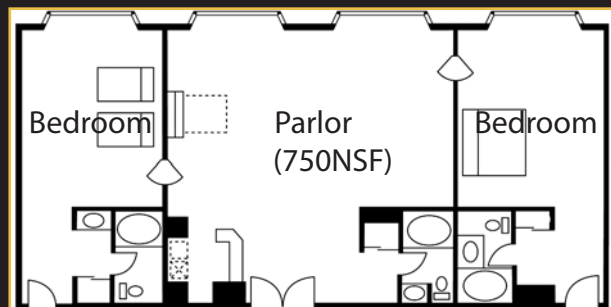
28TH 1 Bedroom: CEA Member: \$11,380 / Non-Member: \$13,290 / Additional Night: \$2,275
 28TH 2 Bedroom: CEA Member: \$13,970 / Non-Member: \$16,200 / Additional Night: \$2,795

28TH FLOOR SUITES



Stay high above the Las Vegas Strip in one of our 28th Floor Suites and really put your head in the clouds. With one-of-a-kind views, these 1,125 sq. ft. suites (750 sq. ft. parlor) provide everything to help you relax and make the most of your stay with us. For overnight guests or family, there is a Murphy bed in the parlor.

Sq. Ft. 1,125 (accommodates up to 50 people)



Please contact Bobby Baumler (bbaumler@CE.org) with additional questions.
 Reservation: 5-nights (January 7-12, 2013)

Actual room and parlor setup and dimensions may differ slightly from those represented on diagrams. No freight shipments are permitted to be delivered to CES Hospitality Suites as these suites may not be utilized for exhibiting equipment or products. Please refer to the LVH Suites addendum for detailed Rules & Regulations.



LVH - LAS VEGAS HOTEL & CASINO SUITES

29TH FLOOR SUITES



The 29th Floor Suites feature either one or two bedrooms and views of either the golf course or Las Vegas strip. Each suite features a parlor offering a 900 square foot parlor.

Sq. Ft. 1100 (accommodates up to 50 people)

PARK AVENUE SUITES



The Park Avenue suite features two bedrooms and a 900 square foot parlor.

Sq. Ft. 1400 (accommodates up to 50 people)

28TH FLOOR NAPA SUITES



The 28th Floor Napa Suites are available in either a one or two bedroom configuration. Each suite offers a 750 square foot parlor and views of the Las Vegas strip/downtown.

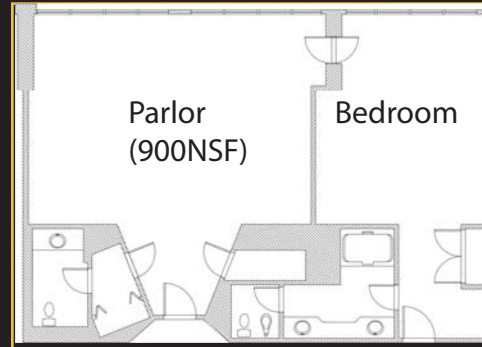
Sq. Ft. 1400 (accommodates up to 50 people)

29TH FLOOR THEME/VILLA SUITES

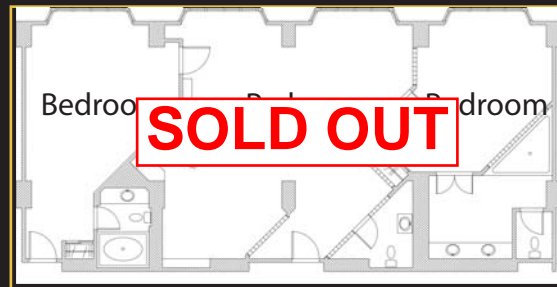
Please contact CES Sales for additional details.

Suite Layout	CEA Member	Non-Member	Additional Night
Hollywood	\$23,560	\$27,550	\$4,712
Bahamas	\$20,970	\$24,490	\$4,194
Desert	\$20,970	\$24,490	\$4,194
Gold Coast	\$20,970	\$24,490	\$4,194
Santa Fe	\$23,560	\$27,550	\$4,712
Sales Villa	\$23,560	\$27,550	\$4,712
Med Villa	\$53,870	\$	\$

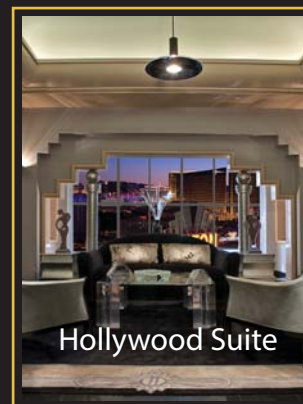
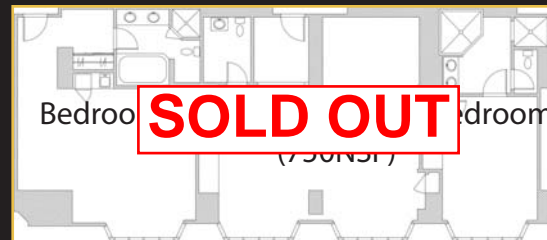
29TH 1 Bedroom: CEA Member: \$12,850 / Non-Member: \$15,000 / Additional Night: \$2,570
 29TH 2 Bedroom: CEA Member: \$15,980 / Non-Member: \$19,180 / Additional Night: \$3,195



Park Ave 2 Bed: CEA Member: \$18,610 / Non-Member: \$22,230 / Additional Night: \$3,725



Napa 1 Bedroom: CEA Member: \$16,460 / Non-Member: \$18,360 / Additional Night: \$3,292
 Napa 2 Bedroom: CEA Member: \$18,450 / Non-Member: \$22,050 / Additional Night: \$3,690



Please contact Bobby Baumler (bbaumler@CE.org) with additional questions.
 Reservation: 5-nights (January 7-12, 2013)

Actual room and parlor setup and dimensions may differ slightly from those represented on diagrams. No freight shipments are permitted to be delivered to CES Hospitality Suites as these suites may not be utilized for exhibiting equipment or products. Please refer to the LVH Suites addendum for detailed Rules & Regulations.

